



STEP BY STEP GUIDE
CHANGING YOUR WHEELS

PARTS INVOLVED

THE WHAT'S AND WHY'S

WHAT YOU'LL FIND ON YOUR RIO ROLLER SKATE



BEARINGS

YOU WILL NOT NEED THE SPACER
WHEN CHANGING TO LIGHT UP WHEELS
BUT FOR COASTER WHEELS YOU WILL.



NUT AND WASHER

THESE ARE ESSENTIAL, YOU WILL NEED
THEM TO FASTEN YOUR NEW WHEELS ON.



COASTER WHEEL

NEW RIO ROLLER WHEELS - WE'VE USED OUR BLUE LIGHT-UP WHEELS TO DEMONSTRATE



LIGHT UP WHEEL



MAGNETIC TRIGGER

THIS IS WHAT TRIGGERS THE LIGHTS.
PLACE IN THE MIDDLE OF WHEEL.
BEARINGS WILL GO EITHER SIDE



BOTH TOGETHER

THE TOOL



SKATE TOOL



LET'S GET STARTED >>

USING SKATE TOOL,
UNTHREAD NUT

REMOVE NUT

REMOVE WASHER



PUT TO ONE SIDE

YOUR WHEEL WILL NOW
SLIDE OFF WITH EASE

USING THE TRUCK AXLE,
PUT WHEEL ON EDGE

ANGLE SLIGHTLY AND
APPLY PRESSURE TO ONE SIDE

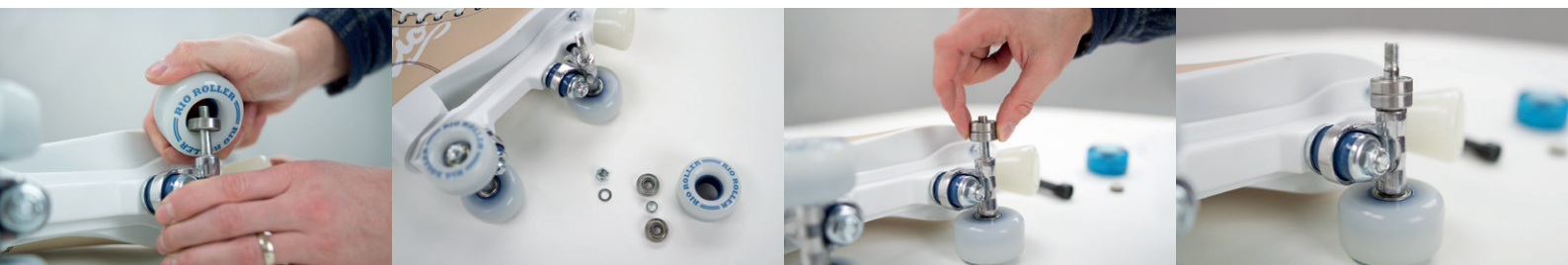


REMOVE BEARING, ROTATE WHEEL
AS YOU PUSH TO HELP REMOVE

FIRST BEARING OUT

WHEEL SHOULD NOW FACE DOWN,
REPEAT PROCESS

ANGLE SLIGHTLY AND
APPLY PRESSURE TO ONE SIDE



REMOVE BEARING, ROTATE WHEEL
AS YOU PUSH TO HELP REMOVE

BOTH BEARINGS OUT

NOW TAKE BOTH BEARINGS,
PLACE BACK ON TRUCK AXLE

BOTH BEARINGS ON TRUCK



START WITH WHEEL FACE DOWN,
PLACE WHEEL ON TRUCK

APPLY PRESSURE AS YOU PUSH
YOUR WHEEL DOWN ON BEARING
TIP* LIGHT UP WHEELS NEED MORE PRESSURE WHEN PUTTING
BEARINGS IN. THIS WILL EFFECT LIGHTS IF INCORRECT

ONCE FIRST BEARING IS IN PLACE, ADD
MAGNETIC TRIGGER FROM BOTTOM

PLACE ON TRUCK WITH PRINT
FACING YOU, APPLY PRESSURE
TIP* CHECK BEARINGS ARE IN SECURELY
BEFORE MOVING ON TO NEXT STEP



ONCE BEARINGS ARE IN CORRECTLY,
TAKE YOUR WASHER

PLACE WASHER BACK IN
ORIGINAL PLACE

NEXT PLACE YOUR NUT BACK

FINALLY TIGHTEN NUT
TIP* OVER-TIGHTENING CAN EFFECT ROLL

STILL NOT SURE?
CONTACT US



*IF YOU'RE EXPERIENCING ANY PROBLEMS WITH THE
REPLACEMENT OF YOUR WHEELS THEN PLEASE DON'T
HESITATE TO GET IN TOUCH.*

ONLINE FORM



@RioRollerOfficial

EMAIL US:

info@rioroller.com

WWW.RIOROLLER.COM